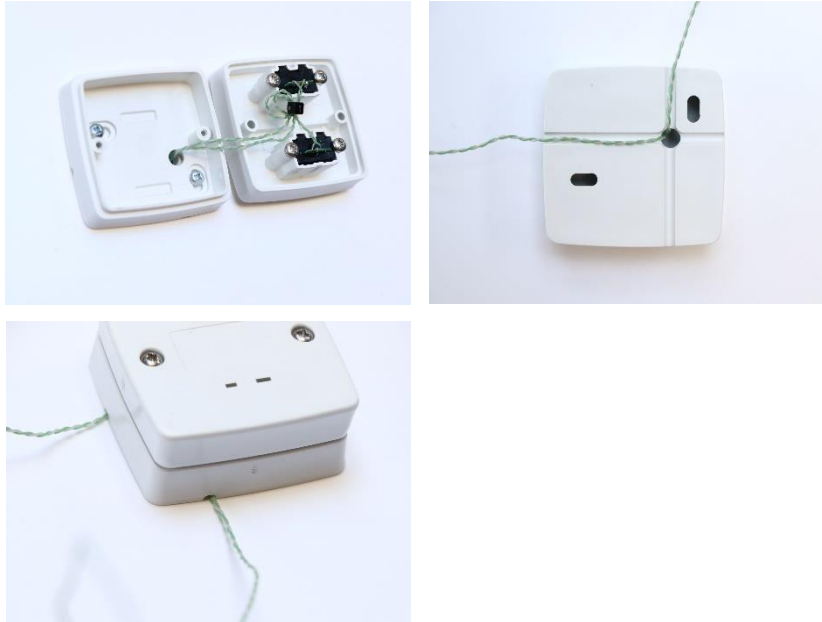


TC Wall Port with Integral Fine Wire Installation Guide

The TC Wall Port is now available in both single and dual input versions. In order to make installation even easier, these products are also now available with integral fine wire probes which can be supplied in lengths ranging from 1 - 20m.

To install, firstly position your TC Wall Port at a convenient location which is within easy reach. The integral fine wire probe for the Single input TC Wall Port can be positioned to exit either from the side or the rear of the Wall Port. This allows for the user to monitor pipework or other surfaces which are directly behind the TC Wall Port if required.

The integral fine wire probe for the Dual Input TC Wall Port can exit from the rear or any of the channels.



Attach the probe sensor to the object you wish to monitor using a TAPS adhesive pad or similar tape. Run the probe wire back to the TC Wall Port and fix the back panel to the wall using the slotted screw holes provided.



Now fix the face plate to the back plate using the screws provided.



The TC Wall Port is now ready for use.

Connect your thermocouple thermometer with a coiled connection lead to get a quick and accurate temperature reading.



Parts List	
Part Number	Description
TCWALL-KA01-C	Thermocouple Wall Port with Integral Fine Wire Probe in Various Lengths
TCWALLPORT-D-KA01-C	Double Thermocouple Wall Port with Integral Fine Wire Probes in Various Lengths
TAPS	Adhesive Attachment Pads (book of 100)
KMPC1MP	Coiled Connection Cable 1m Length
KMPC2MP	Coiled Connection Cable 2m Length
MM2008	Thermocouple Legionella Thermometer
MM7000-2D	Thermocouple Barcode Scanning Logging Thermometer